



# **Los Alamos Field Office Update Regional Coalition of LANL Communities**

**September 19, 2014**

**Kim Davis Lebak  
Los Alamos Field Office Manager  
National Nuclear Security Administration  
U.S. Department of Energy**



UNCLASSIFIED



# Presentation Outline



- **Secretary Moniz Visit**
- **Environmental Priorities**
- **Supply Chain Management Center**
- **Upcoming Construction Projects**



# DOE Secretary Ernest Moniz Meeting

- **Secretary Moniz met with Regional Coalition leadership on August 11, 2014**
  - Expedient re-opening of the WIPP Facility a priority
  - RCLC supports prioritization of cleanup campaigns at LANL
  - Economic development and diversification initiatives discussed
  - Supply Chain Management Center
  - Northern New Mexico Workforce Training and Technology Transfer Pilot Program





# Environmental Cleanup Priorities

- **Moving Forward, Institute a Risk Based Approach Around Discrete Projects**
  - Based on measurable risk reductions
  - High importance to stakeholders
  - High importance to regulators
- **Top 4 Risk Based Cleanup Action Projects are:**
  - Chromium contaminated ground water
  - Royal Demolition Explosive (RDX) contaminated ground water
  - Surface water boundary protection
  - Individual Storm Water Permit controls & compliance



*Drilling to install the CrEX-1 extraction well began on July 4.*



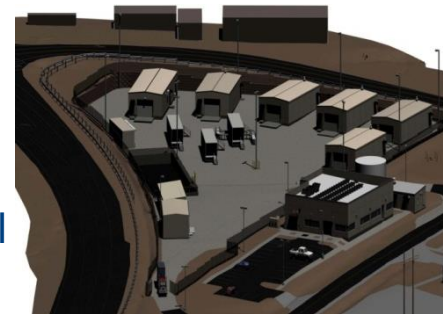
# Supply Chain Management Center (SCMC)

- **DOE/NNSA has listened to New Mexico's feedback**
- **While M&Os are encouraged to use the SCMC, it is not required**
  - NNSA's goal is 4% savings through strategic partnering
- **LANL's prime contract has pricing preference for NNM businesses**
  - If price from NNM is not more than 5% over the national bid, NNM business is used
  - If price is more than 5% over, LANL negotiates with the NNM business before turning to the SCMC
- **All new SCMC agreements must adhere to the community development clause when performing work for LANL**
- **In FY 2014, the SCMC accepted Y-12's recommendation for a regional sourcing approach**
  - New localized approach will award regional supplier contracts to improve lead time, reduce freight cost, and increase use of local small businesses
  - Sites within the same region will be served by the contracted supplier in the area instead of a national, single-source supplier
- **A meeting will be held soon to discuss RCLC's concerns with regard to SCMC and to also evaluate RCLC's proposal to conduct a Pilot or Demonstration Project**



# Upcoming Construction Projects

- **Four projects totaling \$1.8 - \$2.4B**
- **Now thru early 2020s**
- **Transuranic (TRU) Waste Facility Project**
  - Replacement of existing solid TRU waste management storage and characterization capabilities to handle newly generated TRU waste materials for transport to and disposal at WIPP
  - Total Project Cost: \$99.2M
  - Schedule: Construction July 2014 - December 2016
- **Radioactive Liquid Waste Treatment Facility Upgrade**
  - Replacement of existing Radioactive Liquid Waste treatment capability including both low level waste (LLW) and TRU waste operations, achieving a "zero liquid discharge" capability, as well as a secondary waste treatment capability
  - Total Project Cost: \$82.7M (LLW), \$62-96M (TRU)
  - Schedule: Construction October 2014 - May 2018 (LLW), CD 2/3 package scheduled for submittal in 2016, construction complete in August 2021 (TRU)



*Rendering of TRU Waste Facility*



*Rendering of LLWT Treatment Facility*



# Upcoming Construction Projects (cont.)

- **TA-55 Reinvestment (TRP) II C**
  - Replacement of seven facility safety systems to increase overall reliability and help extend service life
  - Total Project Cost: \$89.7M Requested
  - Schedule: Construction complete November 2017
- **Chemistry and Metallurgy Research Replacement (CMRR)**
  - Establishment of analytical chemistry and material characterization capabilities in RLUOB and repurpose space in PF-4 to add additional material characterization capabilities
  - Total Project Cost: \$1.5-\$2.04B
  - Schedule: CD-1 approved, CD-2/3 for 1st subproject expected June 2016



CMRR  
REI-2 subproject  
PEI subproject

TA-55 Reinvestment



# Summary

- **Regional Coalition is an Important Partner**
  - We share the coalition's priorities of environmental stewardship and economic development in Northern New Mexico
  - The RCLC provides a unique communication vehicle for diverse communities and LANL
  - A number of meetings with the Coalition and DOE/HQ Senior Management have occurred
  - Regional Coalition was instrumental in securing an additional \$40 million for Environmental Cleanup in FY14
  - \$100K has been planned for the Coalition in FY15

